



ALASKA DIVISION OF HOMELAND SECURITY &
EMERGENCY MANAGEMENT
Daily Situation Report
25-356 December 22, 2025



Toll-Free 1.800.478.2337

Anchorage Area 907.428.7000

SEOC 907.428.7100

<u>SEOC Preparedness Level</u> Level 1 Routine Operations	http://ready.alaska.gov	<u>Alaska Military Installation Force</u> <u>Protection Level:</u> FPCON Bravo
<u>NTAS Bulletin</u> There are no current advisories. https://www.dhs.gov/national-terrorism-advisory-system	<u>Maritime Security (MARSEC)</u> Level - 1 Minimum Appropriate Security Measures	

(Significant changes from previous situation reports are red.)

Significant Issues: Extreme Cold Warnings and Advisories throughout the state.

Division of Homeland Security and Emergency Management (DHSEM) Public Information:

For current press release, see: <https://ready.alaska.gov/PublicInformation/PressReleases>

Department of Health (DOH):

For resources and current information, see: <https://health.alaska.gov/en/>

Travel Alerts and Conditions:

For current driving conditions, dial 511 or visit: <https://511.alaska.gov/>

Barry Arm Landslide / Tsunami Risk:

For the latest information on the Barry Arm Landslide and Tsunami risk, click here:

<https://dggg.alaska.gov/hazards/barry-arm-landslide.html>

Earthquakes:

United States Geological Service (USGS) Earthquake Information:

<https://www.usgs.gov/programs/earthquake-hazards>

National Tsunami Warning Center: <https://tsunami.gov/>

Alaska Volcanoes:

Great Sitkin Alert Level: **Watch** and Aviation Color Code: **Orange**

Shishaldin Alert Level: **Advisory** and Aviation Color Code: **Yellow**

For Alaska Volcano updates, go to: <https://www.avo.alaska.edu/>

Air Quality Index (AQI) Advisories: Air Emergency for the Mendenhall Valley.

For the most up-to-date Air Quality Index Advisories:

<https://dec.alaska.gov/Applications/Air/airtoolsweb/Advisories>

Spills of Oil and Hazardous Substances:

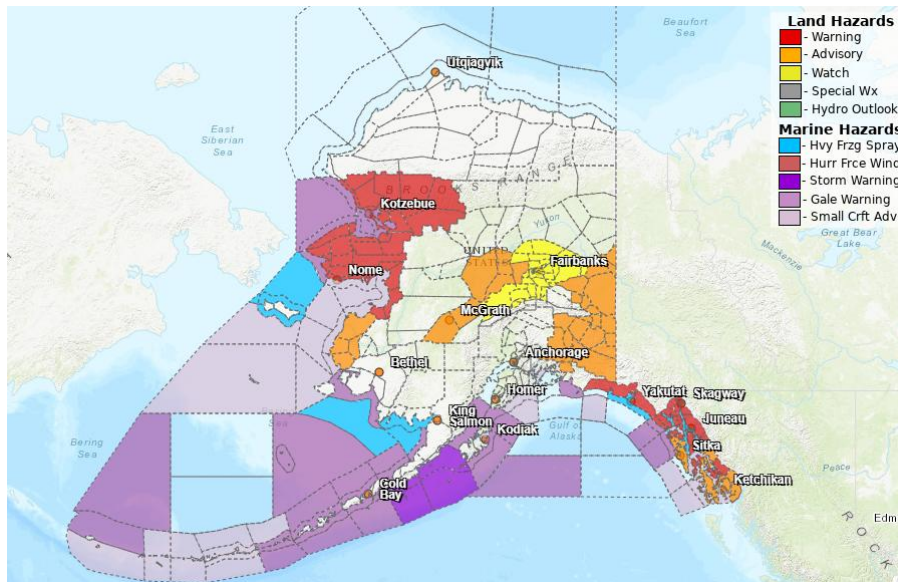
The Alaska Division of Environmental Conservation (ADEC) Spill Prevention and Response page is

located at: <https://dec.alaska.gov/spar/ppr/spill-information/response/>

Alaska Cyber Security Information:

State Employees may sign up for cybersecurity notifications and alerts at:
<https://oit.alaska.gov/security>

Significant Weather:



WARNINGS:

Winter Storm Warning – South Slopes of the Western Brooks Range; Noatak Valley; Kivalina and Red Dog Dock; Lower Kobuk Valley; Baldwin Peninsula; Northern Seward Peninsula; Upper Kobuk Valleys: Remains in effect until 9 AM AKST Wednesday.

Southern Seward Peninsula Coast; Interior Seward Peninsula; Eastern Norton Sound and Nulato Hills: Remains in effect until midnight AKST tonight.

Blizzard Warning – Shishmaref; Bering Strait Coast: Remains in effect until noon AKST today. **City and Borough of Juneau; Haines Borough and Klukwan; Municipality of Skagway; Glacier Bay; Eastern Chichagof Island; Admiralty Island; Cape Fairweather to Lisianski Strait; Western Kupreanof and Kuiu Island; City and Borough of Wrangell:** Remains in effect until noon AKST Tuesday.

Extreme Cold Warning – City and Borough of Yakutat: Remains in effect until noon AKST today.

High Wind Warning – City and Borough of Juneau: Remains in effect until 9 AM AKST this morning.

WATCHES:

Winter Storm Watch – White Mountains and high terrain south of the Yukon River; Upper Chena River Valley; Tanana Flats; Eielson AFB and Salcha; Goldstream Valley and Nenana Hills; Chatanika River Valley; Two Rivers; Fairbanks Metro Area; Nenana; Central Interior; Northern Denali Borough: Remains in effect from Tuesday evening through Thursday morning.

ADVISORIES:

Winter Weather Advisory – Yukon Delta Coast: Remains in effect until noon AKST today.

Cold Weather Advisory – Thompson Pass; Northern Copper Valley; Western Copper Valley; Central Copper Valley; Ernestine; Southern Copper Valley; Tok Cutoff; McCarthy: Remains in effect until 11 AM AKST Tuesday.

City and Borough of Yakutat: Remains in effect from noon today to noon AKST Tuesday.

Petersburg Borough; City of Hyder: Remains in effect until noon AKST Tuesday.

City and Borough of Sitka; Prince of Wales Island; Ketchikan Gateway Borough; Annette Island: Remains in effect until noon AKST Tuesday.

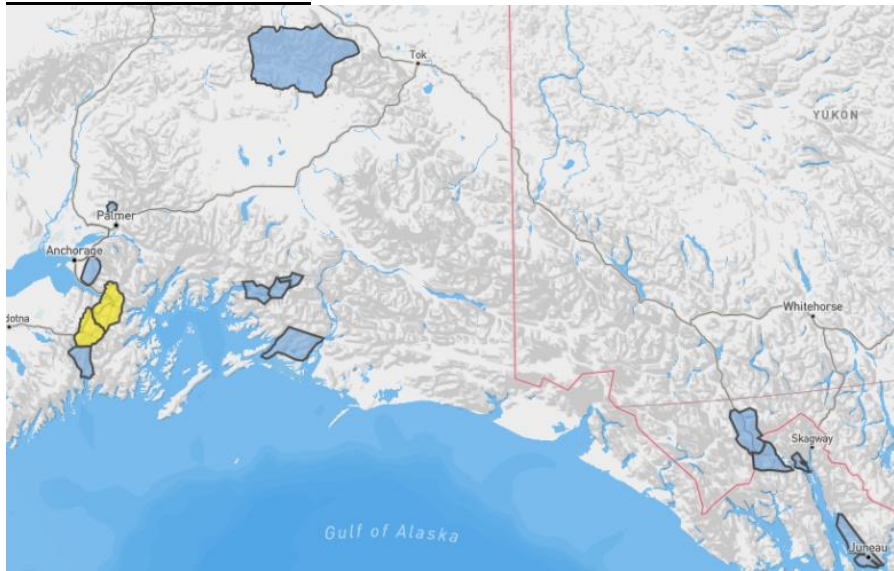
Central Interior: In effect until 9 AM AKST Monday.

Fortymile Country; Upper Tanana Valley: Remains in effect until 3 PM AKST Monday.

Kuskokwim Valley: In effect until 9 AM AKST Monday.

For more information, go to <https://weather.gov/arh>

Avalanche Hazards:



Turnagain Pass and Girdwood – Moderate above 2,500; **Low** above 1,000; **Low** below tree line.

Summit Lake – Moderate above 2,500; **Low** above 1,000; **Low** below tree line.

Hatcher Pass – Low above 2500'.

Seward and Lost Lake – Early season conditions still exist in the Seward and Lost Lake zone.

Valdez Maritime, Intermountain, and Continental – Moderate above 4000' **Low** below 4000'.

For more information and the most current avalanche conditions, go to <https://alaskasnow.org>

The Next Situation Report will be on **December 23, 2025**. A significant change in situation or threat level will prompt an interim report. This report is posted on the internet at <https://ready.alaska.gov/sitrep>.

To register for email distribution, go to: <http://list.state.ak.us/mailman/listinfo/dhsem.situation.report>.
Direct questions regarding this report to the SEOC at 907-428-7100 or seoc@alaska.gov.